



THE COQUINA II

AT BULOW CREEK PRESERVE



THE COQUINA II

3 Bedrooms 2 Baths
Covered Porch and Lanai
3 Car Garage

1,834 Total Living
2,869 Total Under Roof

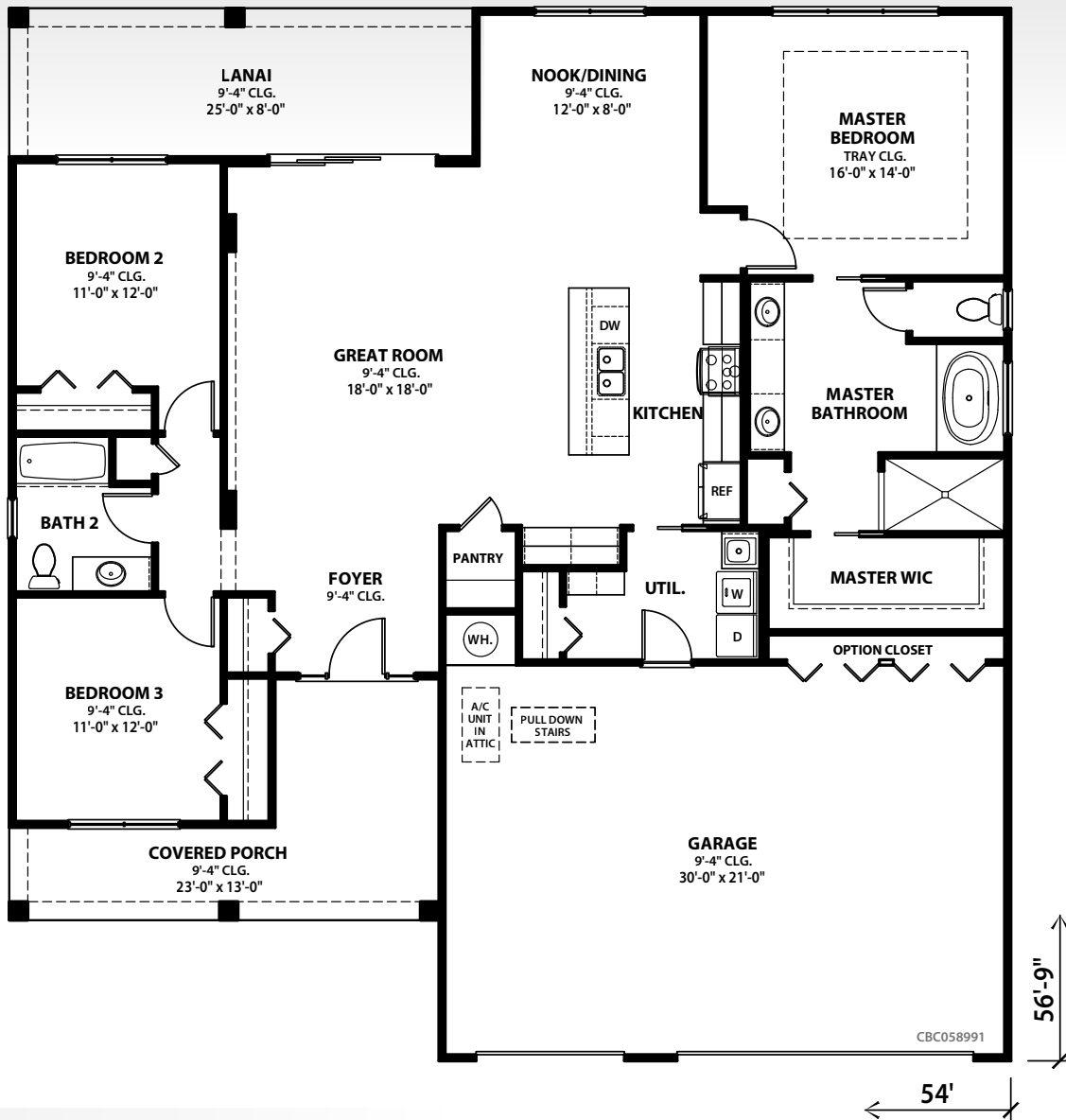
Vanacore Homes

Your Hometown Builder Since 1991

NEW HOME SALES & INFORMATION CENTER
3500 Merritt Drive, Ormond Beach, FL 32174

Artist renderings are concepts only and may vary from actual construction. Concepts shown here may include optional design elements such as stone accents and metal roof accents. Frame homes will increase the interior living square feet on average by 100 depending on model. See your Vanacore Representative for details and pricing.

10 23 20



THE COQUINA II

1st Floor Living	1,834
Lanai	200
Entry	181
Garage	654

Total Living	1,834
Total Under Roof	2,869

All rights reserved. All elevations and floor plans are the exclusive property of Vanacore Homes, Inc. and may not be copied or duplicated without written permission. Vanacore Homes reserves the right to modify plans, alter specifications and change dimensions without consent of or notice to the buyer. All dimensions are approximate. Artist renderings are concepts only and may vary from actual construction. Some concepts may include design elements that are considered options. Floor plans are visual depictions and may vary from actual construction. Frame homes will increase the interior living square feet on average by 100 depending on model. See your Vanacore Representative for details. 10 23 20



Vanacore Homes

Your Hometown Builder Since 1991

NEW HOME SALES & INFORMATION CENTER
3500 Merritt Drive, Ormond Beach, FL 32174